



# CSV CONSTRUCTION CELEBRATING



# YEARS OF ENGINEERING EXCELLENCE 1994 - 2024

# At the frontline of shoring and microtunneling

Hannes Coetzee

When CSV Construction constructed the extensions to the Bellville Waste Water Treatment Works in 2011, we had to install temporary shoring to retain a large sewer pipeline for a deep excavation.

It was decided to invest in a steel sheetpile shoring system. The system proved to be extremely effective in retaining deep excavations in the geological conditions of the Cape Flats.

Our shoring system was expanded when we were awarded the Northern Areas Bulk Sewer pipeline – a 5 to 8 m deep bulk sewer to be constructed in water-logged sandy conditions in a built-up industrial area. This rapidly expanded our shoring capabilities and expertise.

When we were awarded the Cape Flats 3 Bulk Sewer project in 2015 we decided, based on what we had learned on the Northern Areas Bulk Sewer, that a safer and more scientific means of installing deep pipelines is possible. This led to the creation of our microtunnelling division.

Ageing water and sanitation in-



Hannes Coetzee

rastructure is a growing problem faced by municipalities throughout the country. Trenchless technologies offer a cost-effective way to rehabilitate and replace ageing infrastructure with minimal disruption.

CSV Construction, realizing

the shortfall in the market, pioneered the introduction of trenchless pipeline installation through pipe installation using the microtunneling method.

Using trenchless technology, and microtunneling in particular, to install both water and sewer bulk pipelines, allows CSV to manage and significantly reduce the risks often associated with conventional open excavations. These include public safety, worker safety, risk of damage to other existing utilities, as well as the risks associated with the client's schedule and budget. It also provides solutions in cases where conventional open-trench pipe laying would simply not be possible.

CSV Construction offers microtunneling with Herrenknecht AVN type microtunnel boring machines (MTBM) for the installation of bulk service pipelines in most ground conditions, in various sizes for both pressured and



The microtunneling machine installed in Mitchells Plain in October 2020.



Microtunneling machine site prep being done in Mitchells Plain.

gravitational pipelines at any depth and to very accurate tolerances. Distances of up to 500 m can be achieved.

Our microtunneling operation is further supported and enhanced

by our ability to supply and install steel sheetpile shoring systems by means of either high frequency vibrating hammers, silent piling (hydraulic press) methods, or even crane suspended variable frequency vibrating hammers. The shoring systems allow us to work at any depth in a controlled environment, free from interference by the prevailing underground water table.

To date we have completed more than 5 498 m (44 No) of bulk pipeline construction by microtunneling in varying ground conditions, at lengths of up to 220 m, at depths of up to 20 m, all completed to a tolerance of less than 25 mm, both horizontally and vertically.

We are providing shoring solutions to contractors in general

and offer specific advice and guidance in the application of microtunneling.

CSV Construction plans to continue growing its shoring and microtunneling capabilities. Our fleet of microtunneling machines has grown from the initial one AVN 800 XC machine to our current five No microtunneling machines that can offer pipelines from 600 mm to 1 500 mm diameter in size.

Our shoring system has grown to a total of 1 800 tonnes of sheetpiles with installation methods varying from silent press, high frequency hammers as well as crane suspended variable moment vibrating hammers.

■ Hannes Coetzee is a director of CSV Construction and a TBM specialist.



Microtunnel machine prep before installation.



Temporary shoring being installed at the Bellville Waste Water Treatment Works in 2011 to retain a large sewer pipeline for a deep excavation.



THE WORLD'S BEST, FROM A SINGLE SUPPLIER



CONTACT US

021-933-2383

elb@elbquip.co.za

www.elbequipment.co.za



# 30 years of quality and workmanship continues



**Alex von Klopmann**, managing director of CSV Construction, provides a overview of the company's success over the past 30 years.



The company's head office was at the Cape Town International Airport from 1998 to 2007.

**T**he year 1994 remains a historic year for two reasons; a year to start a new company, and Nelson Mandela being released from prison and South Africa's future uncertain.

This year CSV Construction celebrates 30 years of business success – a triumph ascribed to quality people, quality machinery and quality work.

But it all started with humble beginnings when the three founding partners took the uncertain step into private enterprise.

CSV Construction is now known as one of the Western Cape's leading diversified civil engineering companies.

## In the beginning

The company first opened its doors in Wolseley, where it operated from a building known as the Whitehouse, previously belonging to the Department of Water Affairs. The company started out as a small contractor with three bakkies and 15 employees.

Today, it is the largest private specialist in civil concrete structures in the Western Cape, among the leading providers of civil infrastructure services, and a specialised building company. It is regarded as one of the top wastewater treatment works contractors and provider of water-retaining structures.

Its combined services make it one of the province's top five companies in the industry.

CSV Construction has a well-trained team – among them professionals, including engineers and quantity surveyors, accountants, health and safety practitioners, and environmentalists.

Our diversified interests make us a strong player in the industry. We could not have achieved this without exceptional staff and a dedicated administrative team, led by Loretha Erasmus.

In early 2000, the structural concrete division was bolstered with the appointment of director Alex Pospech, whose hands-on approach has created an exceptional unit geared for growth.

The business expanded on the back of numerous projects and has grown to become not only a leading competitor in the Western Cape, but is proud to be considered a leading diversified engineering company at national level.

The 9CE, 8GB company recently extended its portfolio, which includes a hydro power station and wind and solar energy projects in the Karoo and Northern Cape. but the bulk of its work, however, has been in the Western Cape – from Saldanha to Mossel Bay.

## CSV Construction's five core pillars

### 1. Teamwork and commitment

Nothing can be achieved without



CSV Construction's current premises in Firgrove.

a great team effort. This is a fundamental pillar that CSV has achieved.

### 2. Quality people

CSV has a well-trained team of staff, with professionals in multiple disciplines and fields, ranging from civil engineering, mechanics, health and safety, and environmental management to general construction management, quantity surveying and administration.

### 3. Integrity and humility

These are two qualities you don't find often enough today. It goes without saying that these are vital and it's the reason our clients are so loyal.

### 4. Innovation

CSV Construction believes that our competent management team makes us one of the most diversified construction companies in South Africa.

We have been the leader in concrete shutter systems, new shoring systems, and new compacting systems.

We are also the leaders in microtunneling in the country, as well as pioneers of various new technological applications to make our construction task quicker, safer and in the end less expensive for the client.

This is what sets us apart from other construction companies.

### 5. Health, safety and environmental awareness

For the past 30 years a dedicated health, safety and environmental department has ensured that the highest standards are maintained.

All our employees share the responsibility for health, safety and environmental challenges. As a result, the work is more professional and the company has seen



The Whitehouse in Wolseley is where it all started many moons ago.

the benefits.

As contracts have become more stringent in terms of these requirements, CSV Construction's focus on these issues has played an important part in our long-term, healthy relationships with clients.

This department forms a vital pillar of the company in providing successful projects to our clients. It is indeed key to a sustainable and competent workforce who are proud to be employees of such a diverse company. We have provided a healthy and safe working environment where employees are enabled to take the company to a new level of performance in the industry, bringing a competitive and well-structured edge to providing a quality product to our clients, and achieving untold successes on challenging projects year in and year out.

### CSV Construction's X factor

CSV Construction is committed to preserving the environment and employs environmental officers

to monitor and manage sites to minimise the effect that construction sites have on the environment. Recycling of products such as road-building and fill material and selective spoiling of all waste products generated by construction sites have been introduced.

CSV Construction owns our own mobile-crushing and screening plant.

This enables CSV Construction to be more cost-effective, thereby benefitting the client.

### Staff development is key

Since its inception in 1994, the company has recruited the bulk of its workforce from Stellenbosch and the Helderberg region where about 60% of the employees currently live.

Essentially a Helderberg contractor since the start, the company has transported its people to wherever they are needed. As the company has grown, taking on increasingly complex projects, it needed to invest in its workforce.

CSV Construction has an in-

house programme to help employees progress to the next level.

Training facilities at its head office provide for this need, while additional training is supplied by Boland College in Paarl, ACS (Academy of Construction Skills), Tjeka and other accredited training institutions.

It is a management principle that internal relationships and those with clients and service providers are based on healthy, gradual growth. We are proud of our hands-on approach – this is the crux of CSV Construction at all levels. As a result, there is a fundamental belief in attracting good people to create a powerful team to ensure the company remains a major player in the civil and construction industry.

The company, regarded as one of the largest employers in the Helderberg, also boasts a low employee turnover – another reason for its 30 years of success.

### Vision for tomorrow

We aim for CSV to be the contractor of choice for all our existing and new clients for many years to come. We will continue building on future successes based on current values.

## Thank you

I would like to thank everyone who has been involved with CSV Construction and for supporting us the past 30 years.

A special thanks goes to:

- Our dedicated staff and management team, as well as all our spouses for their loyal support.
- My co-directors and senior management for their vision, dedication and leadership.
- All our clients for entrusting us with this challenging work. We are really privileged.
- All the professional consultants for trusting us with a vast amount of diversified work and making us part of their construction team.
- Our suppliers: You play an integral role in the achievement of quality work by supplying quality products and support us with innovative ideas when projects are complicated and challenging.

Let's use the experience gained over the past 30 years to build successfully together over the next 30 years. CSV Construction prides itself on believing in quality work by quality people. We are committed to transformation, skills development and social upliftment. This, along with producing quality work, will make CSV Construction the preferred contractor for clients for many years to come.

# Meeting deadlines requires dedication, persistence and time



During the works at the Contermanskloof Reservoir, molding sloping slabs proved to be a challenging and time-intensive task.



The incoming pipeline at the reservoir was constructed, in total, using 19 m sections welded together to create the 1 000 mm diameter steel pipe.



**BUILDING TRUST**

**Baie Geluk CSV met jou 30ste Verjaarsdag.**

Sika Customer Service Western Cape  
Tel: 021 555 0755, Fax: 021 555 0081  
Email: [wcape@za.sika.com](mailto:wcape@za.sika.com)  
[www.sika.co.za](http://www.sika.co.za)



**HARDWARE · BUILDWARE**

**LET'S BUILD TOGETHER**

**BUCO Blackheath**  
021 905 1119

Ons wil CSV graag gelukwens met hul 30ste jaar van bestaan en hulle bedank vir hul lojale ondersteuning. Ons is trots op ons assosiasie met julle as maatskappy.

Evergreen Office National wens CSV 'n gelukkige

**30<sup>STE</sup> verjaarsdag**

en alle sukses vir die volgende 30 jaar toe!

Evergreen Office National  
Tel: 021 859 3784  
Address: Unit 3 Apex Park, Asla Park, Strand  
37 Main Road, Grabouw, 7160  
[www.evergreenofficenational.co.za](http://www.evergreenofficenational.co.za)



*Van ons almal hier by TYTEC GROEP baie geluk met jul 30ste bestaansjaar!*

Ons hoop om nog vele voorspoedige jare hand aan hand met julle te vier

Tel: 0860 110 126 | Web: [www.tytec.co.za](http://www.tytec.co.za)



Afrimat wens **CSV Construction** geluk met die viering van jul 30ste bestaansjaar. Dankie vir jul goeie en getroue ondersteuning. Saam bou ons 'n volhoubare toekoms.



T: 021 917 8840  
E: [info@afrimat.co.za](mailto:info@afrimat.co.za)

Afrimat is 'n toonaangewende mynbou- en materiale maatskappy.



Skandeer en besoek ons webwerf

# Reservoir project proves that team work pays off

**T**he CSV building division initially focused on constructing warehouses but rapidly evolved into an experienced team capable of building various commercial structures, including shopping malls, medical clinics, and specialized buildings such as wine cellars and bakeries. “During the construction of specialized buildings, our management team is integrally involved in the design process, contributing to design development and planning,” explains Johan Koegelenberg, contract manager of CSV Construction. “With over 100 years of collective experience among our management, we bring a unique perspective to the table.

“Given the diverse nature of construction projects, we recognized the importance of versatility. Therefore, we expanded our team to include expertise in structural and civil components, ensuring that we can offer clients a comprehensive package.

“We recently completed construction of a 100 megaliter reservoir in Cape Town, and we’re currently immersed in a four-year project involving the construction of a stormwater canal. Our outlook for the future is extremely positive, and we’re eagerly anticipating the prospect of tackling challenging and specialized building and civil contracts ahead.”

## Contermanskloof Reservoir

The Contermanskloof Reservoir, a 100 million liter (100 megaliter) facility, was constructed by CSV for the Bulk Water Department of the City of Cape Town. It currently serves as a crucial holding facility, supplying water to Sunningdale, Tableview, and Melkbos. The reservoir receives water from the Voëlvlei Dam, with CSV establishing a connection to the existing Voëlvlei pipeline.

The inception and planning of

the initial reservoir date back to 2014. At that time, the contract was partially fulfilled through a joint venture involving Botes & Kennedy (BKM) and Neil Muller Construction (NMC).

Unfortunately, due to financial constraints, both Botes & Kennedy (BKM) and Neil Muller Construction (NMC) faced liquidation in 2017/18, and completion of the reservoir had to be re-tendered.

For nearly two years, there was no activity on the site. The contract for completing the reservoir was awarded to CSV on 4 December 2020. Work commenced on 4 February 2021 after the client, in collaboration with WSP, obtained the necessary work permit from the Department of Employment and Labour on 3 February 2021.

The project was completed on 5 August 2022, and the certificate of completion issued on 16 September 2022. The final approval certificate was granted on 15 September 2023.

## The team

Johan Koegelenberg assumed the role of contracts manager and was appointed as project manager on 12 February 2021. He meticulously devised a detailed program for the contract to ensure the team remained on course for their targeted completion date of 3 April 2022.

Johan Scriven oversaw the pipelines, roads, and earthworks, while Wim Els took charge of the reservoir, buildings, and structures. Errol Sedras led a team of quantity surveyors responsible for handling certificates, with assistance from Albert Janse van Rensburg on claims. Safety on site was managed by Sonya Calitz and her team, with support from Andrew McLean.

## Site activities

The reservoir is fed through a



Throughout this project CSV employed various foreman and workers on site.



Johan Koegelenberg

900 mm diameter steel pipe, which is lined with cement mortar. Sections of 19 m long pipe are welded together in increments to form the incoming pipe-

line.

This pipe passes a control meter valve that controls the flow of water into the reservoir. The reservoir itself is a concrete structure with the floor slabs, columns, slope slabs, and walls all cast with 35MPA Xypex concrete to make it waterproof.

The roof is constructed using precast beams and hollow core slabs. A structural topping is applied on top of the hollow core slabs to complete the structure. Underneath the reservoir lies a gallery measuring 2 m in height and 1 m in width. This gallery serves as an inspection passage for identifying leaks and facilitating the removal of groundwater through a system of subsoil pipes.

The outgoing line consists of a 1 000 mm diameter steel pipe assembled in 19 m sections through welding. Two separate outgoing pipelines converge to form the main outgoing pipeline. Chlorine is dosed into the outgoing water supply from a utilities building.

Additionally, several chambers

are being constructed to house valves and manage stormwater. Perimeter roads, ClearVu fencing, electrical fencing, street lights, and a security building complete the infrastructure.

## Challenges faced

“The contract presented a significant challenge in itself. Taking over a project of this magnitude without encountering any issues is highly improbable. Therefore, meticulous planning and thorough identification of both new and existing problems are crucial for CSV to keep to the timeline,” says Koegelenberg.

“One of the most significant challenges faced by CSV was the implementation of Autodesk BIM 360. BIM 360 is a cloud-based site management system that requires seamless integration with all on-site operations. As CSV, we are responsible for electronically uploading all documentation to BIM 360 for approval by the consulting firm, WSP. This encompasses a wide range of documents, including quality control reports, safety documentation, drawings, requests for information (RFIs), material approvals, method statements, and more.

“It was a time-consuming and comprehensive process, but was just another stepping stone that needed to be overcome in order to ensure success on this contract.”

There were other challenges, including falling approximately three weeks behind schedule. Va-

rious contributing factors led to this delay, such as adverse weather conditions causing delays in pipe welding, Numsa strike actions affecting pipe welds, shipping issues with valves, and the impact of the Covid-19 pandemic. The construction of sloping slabs posed significant difficulties and was time consuming, remaining on the critical path for a significant portion of the contract.

## Staff on site

CSV employed numerous foremen and workers on site who dedicated themselves tirelessly to the project. Their commitment was exemplified by instances such as casting a slope slab, which commenced at 08:00 in the morning and continued until 02:00 the following day, demonstrating their unwavering effort and determination to meet project deadlines.

The Contermanskloof project also received invaluable support and assistance from the head office staff. Without them, the team would have been lost.

The on-site team included Wim Els, Paul Daniels, Ziahd Klein, Ronnie Booy, Johan Scriven, Errol Sedras, Esihle Faleni, Chase Maree, Dennis Louw, Sonya Calitz, Edwin Julies, Temy Voorman, Charl Bothma, John Cloete, Mitchell Davids, John van Wyk, Dolf Windvogel, Leigh Josias, Sinakhonke Dlamini, Bomkazi Helebe, Brian Tager, Charl Geel, Placido Domingos, Zonke Bunyula, Yolanda Magadla and Kyle Kewuti.

# CONGRATULATIONS CSV CONSTRUCTION



To the entire team at CSV Construction (PTY) LTD on reaching this incredible milestone of 30 years! Your dedication, expertise and commitment to excellence have been the pillars of your success.

For three decades you have shaped our city’s landscapes, building bridges, roads and structures that stand as a testament to your skill and vision.

Your innovative solutions and attention to detail have set you apart as leaders in the field.

Here’s to the past 30 years of achievements and to many more years of success ahead.

CHEERS to a bright future filled with even greater accomplishments!!!

WARMEST CONGRATULATIONS ON YOUR 30TH ANNIVERSARY AND SIGNIFICANT ACHIEVEMENTS.

We are proud to be your supplier in Transport and Plant Hire Solutions

+27 71 491 6336  
leo@yellow-metal.co.za  
www.yellow-metal.co.za

39 Muscat Road  
Saxenburg Park 1  
Blackheath, 7581

Reg No. 2019/361479/07  
VAT No. 413 0315 700  
Director CJ (Leo) Schwemmer

# Cordoba showcases a fresh appearance, courtesy of CSV Construction



CSV completed the Taabosch cellar (formerly Cordoba), along with the farmhouse, roads, and related civil infrastructure.



Forty oval-shaped precast columns with bases needed to be installed in the barrel maturation area at Cordoba.

**MULTIFIX**  
FASTENERS

We wish  
**CSV CONSTRUCTION**  
all the best on your  
30 Year milestone!

Milnerton Cape Town 021 552 0383 | Goodwood Cape Town 021 591 9129 | Roodepoort Gauteng 011 791 1851

Baie geluk aan  
**CSV**  
**KONSTRUKSIE**  
met julle  
**30 jaar**  
in die bedryf.  
Ons is trots om met  
julle geassosieer  
te wees.

**TGS**

021 875 5652 c/o Protea & Eenzaamheid Road, Klappies  
[www.tgsgroup.co.za](http://www.tgsgroup.co.za)

**Coastal**  
HIRE

**SOMERSET WEST**  
021 854 4432  
somerwest@coastalhire.co.za

**WORCESTER**  
023 492 0038  
worcesterc@coastalhire.co.za

**STELLENBOSCH**  
021 887 8449  
stellenbosch@coastalhire.co.za

Coastal Hire is the leading small equipment hire franchise in South Africa with over 120 stores trading nationwide and in Southern Africa.



CSV had to modify an existing farm store to tie it into the barrel maturation area, which served as the fermentation area.

**TALISMAN HIRE BLACKHEATH**  
**EXTENDS OUR HEARTFELT CONGRATULATIONS TO**  
**CSV CONSTRUCTION ON ACHIEVING THE REMARKABLE MILESTONE OF 30 YEARS IN THE INDUSTRY!**

**Blackheath**  
**021 905 9474**  
15 Vonkel Street, Saxenburg Industrial Park 2

**TALISMAN** **Hire**  
BUILDING A BETTER FUTURE



View of Cordoba, now known as Taaibosch Wines.

# From Cordoba to Taaibosch – CSV played pivotal role in transformation

**C**ordoba Cellar is nestled at the foot of the Helderberg mountains, between Stellenbosch and Somerset West. Originally acquired by the Oddo family from France, this picturesque wine estate is now under the stewardship of Schalk Willem Joubert, serving as CEO and winemaker at Cordoba, which has since been rebranded as Taaibosch Wines.

CSV undertook a comprehensive project on the farm encompassing three key phases – construction of the cellar and farmhouse, and the development of roads and associated civil works. The collective value of these endeavors amounted to approximately R55 million. Each phase presented its own unique set of challenges, yet through exemplary teamwork and unwavering determination, the CSV team overcame obstacles to deliver work of exceptional quality.

Commencing on 21 February 2019, the project was scheduled for completion by 31 November 2020. However, the final completion certificate was issued on

31 January 2022.

Site handover occurred on 25 February 2019, marking the commencement of demolition work on existing buildings to clear space for the new cellar. Paul Daniels led the demolition efforts, notably removing an unused entertainment hall to make room for the barrel maturation area.

Bulk excavations for the barrel maturation area were meticulously executed into the mountainside, ensuring optimal temperature conditions for wine storage.

Precast concrete panels (2,74 m x 7,4 m), weighing 17 tons each, presented a formidable challenge during installation of the back wall of the maturation area, requiring precise coordination.

The sequence was done in reverse – 75 mm blinding first. Next the precast wall panel with starters sticking out and lastly the base to tie it all together. Due to space constraints the panels had to be dropped in with a 250 ton mobile crane. Daniels managed to do all 30 panels in just three days.

Concurrently, work commenced on the fermentation area in the

cellar, involving extensive modifications to an existing farm store.

Simon Swiegelhaar oversaw interior demolition and construction, including upstands for the new walls as well as plinths for all the imported Italian concrete wine tanks.

Charl Bothma was tasked with the installation of essential pipework including effluent, storm water, sewerage, fire, and water pipelines. The drain pots for the effluent water had to line up exactly with the tile lines, making it a very difficult job to lay the effluent pipes in the right positions with the correct offsets to each drain pot – 64 individual drain pots were installed successfully.

Laying of the cellar's flooring, adorned with imported Interbau Uni Red tiles from Germany, experienced a two month delay due to shipping complications.

Daniels also installed 40 oval shaped precast columns on bases in the barrel maturation area. Preparations commenced for a massive 1 044 m<sup>2</sup> deck that was cast all in one to form the new grape loading/offloading area – 320 cubes

of concrete was used. Penetron add-mixture was used in the concrete as a waterproofing agent as this deck is situated directly above the barrel maturation area. The specification also called for the deck to be completely flooded with water for 10 days to allow curing. The new cold room, plant room and office was built above the new ground floor deck.

Outside the cellar, road construction was spearheaded by Brian Tager and Trevor Schaefer, ensuring timely completion of the roads, paving and cellar for the harvest intake in February 2020.

Brian Tager oversaw the 280 m section of grass block road, and Trevor the layer works for the exposed aggregate concrete roads.

At the end of 2019 Mitchell Davids joined the team to start work on the Cordoba Farm House. It required the demolition of three farm workers' houses built by the previous owner. Up until then the bottom farm house was being used as a site office by CSV.

The new farm house is perched on a steep slope, necessitating the construction of retaining walls to

ensure seamless integration with the terrain. Strategically placed staircases lead from the garage and scullery to the main living area, facilitating smooth movement throughout the property. The house comprises three bedrooms and three bathrooms/toilets, along with a separate guest toilet. The study boasts breathtaking vistas of the Helderberg mountains, adding to the allure.

Johan Koegelenberg, the ever-present building division contract manager, played a pivotal role in maintaining project momentum and adherence to schedule, ultimately ensuring timely completion for the upcoming harvest – a testament to a satisfied client indeed.

Jaco Vorster also played an important role as quantity surveyor, responsible for securing adept subcontractors and negotiating favorable rates with professional counterparts to ensure that CSV stayed profitable.



Johan Koegelenberg

**ONS  
GELUKWENSINGE,  
DANK EN  
BESTE WENSE  
GAAN AAN  
CSV  
CONSTRUCTION  
MET HUL 30STE  
BESTAANSJAAR!**

**N&M**  
DRILLING | BLASTING  
CK 2010/076107/23

11 Sam Jaff Street  
Kimdustria  
Kimberley  
053 841 0024  
info@nmdb.co.za

# Dedicated to a greener future



The Longyuan Mulilo De Aar 1-2015 1 MW Turbine project.



The construction of the 765 kV Perseus blast wall in Bloemfontein is part of CSV's commitment to building a greener SA.



CSV was tasked with constructing a concrete base for wind farm turbines at the Longyuan Mulilo De Aar 1 project.



insurance brokers north

TEL: 021 683 8383

Gemagtigde Finansiële Diensteverskaffer FSP Nr. 4880

It has been our privilege as service providers to have journeyed with you for so many years. Your innovation and dedication to exceptional standards is your hallmark and your commitment to social upliftment, an inspiration to us all.

*May your 30 year legacy pave the way for even greater heights in the years ahead.*

**From all of us at Phoenix North**

XT1 VMB008-00240424

**CELEBRATING**  
**30 YEARS**  
**OF CSV CONSTRUCTION**



*AfriSam congratulates CSV Construction on three decades of building excellence. As a proud partner we look forward to Creating Concrete Possibilities together.*



CSV Construction has set the standard for excellence in construction; consistently delivering projects that not only stand the test of time, but also positively impact communities while adhering to strict safety standards.

We understand the importance of collaboration to achieve shared goals, and it is a privilege to be your A1 choice - thank you for trusting us with your most demanding projects.

**AFRISAM READYMIX DELIVERED ON-SITE, ON SPEC AND ON-TIME**

1013145





# CSV is a powerful player in renewable energy

**Randall Davids**

**C**SV Construction initially entered the energy industry sector in 2008 when Eskom rolled out its Build Programme (capacity expansion programme) to support the high demand in electricity generation capacity and increase the country's energy reserves.

In 2012 CSV Construction expanded its operations in the renewable energy sector.

**Energy sector**

Construction included a 765 kV line from the then under construction Medupi Power Station down to the Koeberg Nuclear Power Plant in Cape Town, allowing the national grid to distribute and cope with the newly added pressure of increased electricity generation.

Numerous contracts were awarded to CSV in this roll-out.

Over the past decade CSV completed many 765 kV related contracts doing civil and related work at various substations.

These works consisted of bulk excavations, platform works, earthing, concrete foundations, structural steel works, buildings, roads, and fencing.

The extremely dangerous part of these projects was to work in or near live yards and doing bulk blasts, due to the soil conditions around the substations. Having



The Mulilo Sunpower 75MW Solar PV project at Copperton in the central Karoo.

the support of our staff, subcontractors and suppliers, as well as supplying our own concrete, was the recipe for success. Completing all these contracts on budget and in time, was an achievement on its own.

**Renewable sector**

While the above-mentioned program was in full swing, the government announced a Renewable Energy Independent Power Producer Program (REIPPP) in March 2011.

Once again CSV Construction saw an opportunity and decided to become involved. Back then the qualifying technologies were onshore wind, solar PV, solar thermal, biogas, and small hydro plants.

From 2011 to the beginning of 2015, five rounds of reverse auctions were held for construction and supply of 3 625 MW of large-scale (<5 MW) renewable energy capacity. This programme chan-



Randall Davids

ged once again when the national development plan added further capacity in the vision for 2030. It included private off-takers and the threshold was reduced to 100 MW for private IPP.

This meant further opportunities for the construction industry with the relaxation of government economic development, procurement policies, and other statutory requirements.

CSV has completed many projects in these rounds and is still working on others. We are a leading role player in the market and can help our clients achieve a better product. The projects are just getting bigger, and capacity is increasing.

We want to thank our team involved in these projects as well as our employers for allowing us the opportunity to assist in making life a little better for the public with sustainable electricity.

Green energy for South Africa!



Congratulations to CSV for 30 years of outstanding service and quality workmanship! Kaltron is proud to have worked with CSV for so many years, and we can't wait to see what the future holds for them.

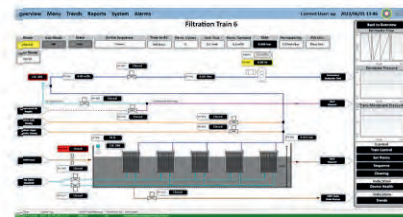
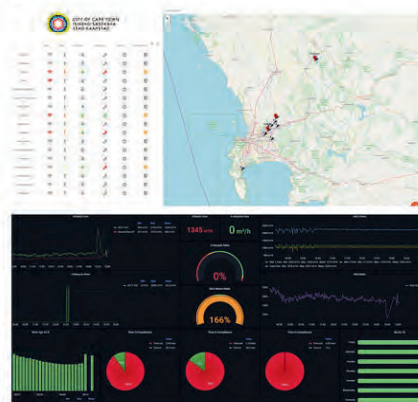


One of our most recent projects, a 9 train membrane bioreactor plant for the City of Cape Town, which included DO controlled fine bubble aeration in the three bioreactors and a cleaning in place system that can be scheduled to run automatically by the plant's Process Controllers. The control logic is able to calculate the biomass in the system and automatically remove the correct amount of waste activated sludge in order to maintain homeostasis. The plant can process up to 81 Megalitres of raw sewerage per day at Peak wet weather flows.

This is just the tip of the iceberg in terms of projects that we have successfully commissioned over the years. We also have extensive experience when it comes to MV supply installations, MV drives and synchronised MV generators. Most recently we commissioned a 4 MW synchronised Generator system for Cape Flats Waste Water Treatment Works.

Kaltron tailor made an online monitoring portal for the City of Cape Town. This platform receives data from our custom edge devices (KMAC) installed inside 90 generators that we supplied and commissioned. The data is fed to the cloud using the MQTT protocol. We are able to use this data for predictive maintenance which ensures greater availability of infrastructure and prolonged service life. This platform is an absolute must have when managing remote infrastructure, from Generators to pump stations, if it has a communication port, we can get the data into the cloud.

We also offer high resolution data logging with some of the most amazing graphics that makes visualisation and understanding of your data easy. We have successfully deployed instances that are logging data at a resolution as low as 50 milliseconds per data-point. We can then manipulate the data to make it easy to interpret and quickly identify any issues that might be hidden in the process. Once analysed, this high resolution data is then down-sampled to make long term storage possible. This kind of high resolution logging gives you ultimate control of your process.



Kaltron is a Gold certified Ignition Integrator, Adroit Certified, a Schneider Systems Integrator and a Siemens Water Partner.



info@kaltron.co.za | +27 21 945 2111 | kaltron.co.za | /kaltronelectricalengineering

# Long service employees contribute to continued success

Alex Pospech



Alex Pospech

**H**aving joined CSV 25 years ago, I am privileged to be supported by a trusted, motivated and dedicated operations team who have been with the company for many years.

- Elzahn le Roux (20 years) and Charmaine Duke (12 years) lead the HR department, overseeing the engagement of over 500 staff members.
- Andrew McLean (15 years) and his team are dedicated to maintaining the highest standards of health and safety.
- Johan Muller (16 years) leads the procurement department and ensures timely delivery of materials to various sites through his team.
- The workshop, overseen by Andre Kotze (6 years) and Dirk Thiarth (24 years), along with their team of mechanics, manages a fleet of over 96 yellow plant vehicles.



The Lesotho sewage plant was among the construction projects undertaken by CSV.



Ground being reworked during one of CSV's projects.

Our core operations would be nothing without the dedication

and expertise of our construction managers who run our projects and lead our teams in the field. We are fortunate to have highly skilled team members who have mastered a diversity of projects and supported CSV over a number of years, most having been with CSV for over 10 years.

We thank them and their teams for their remarkable efforts in the field and for contributing to our reputation as one of the leading contractors in South Africa.

The flat reporting structure en-



A bird's-eye perspective of a waterworks site.



CSV engages in a variety of construction projects, including reservoirs, microtunneling, and commercial buildings.

ensures that each employee meets company goals, fostering a sense of equality in embracing CSV's values, mission, and a culture of success.

Engaged in a diverse array of construction projects over the last 30 years, ranging from water

treatment works, reservoirs, microtunneling, and renewable energy to industrial and commercial buildings, CSV has consistently aimed to deliver high-quality work with a proactive and practical approach, grounded in sound engineering principles.

The company is esteemed as a trusted partner to its clients and their representatives, renowned for delivering projects efficiently, effectively, and with innovative approaches.

We celebrate the milestone of 30 years and eagerly anticipate another three decades of delivering quality projects to South Africa.

■ Alex Pospech is the director overseeing CSV Construction's structural concrete division.

## BAIE GELUK

Ons sien uit na die volgende 30 jaar!






### megamix

**Ready Mix Concrete**

**Tel: 021 845 8189**

DBHS24-DB240421

## Baie geluk, CSV Konstruksie!

Congratulations CSV Construction on reaching 30 years in business!




We're honoured to have been your trusted equipment supplier for Bell ADTs and Kobelco Excavators throughout our long-standing partnership. Here's to many more years of success ahead!

**FOLLOW US ON**    

Tel: +27 (0)11 928 9700 • E-mail: sales@bell.co.za  
www.bellequipment.com

**Strong Reliable Machines**  
**Strong Reliable Support**



Absa Relationship Banking

## Congratulations on 30 years!

We're proud to celebrate CSV Construction for three decades of exceptional quality and employee safety.

We'll continue to enable this rich heritage.

Find out how Absa can support you:

absa.co.za/business

Ts&Cs apply. Auth FSP/ACRCP7

Your story matters 

# CSV places strong emphasis on environment, health, and safety

**“Action is the foundational key to success,”** says Andrew McLean, CSV Construction’s environmental specialist.

For the past 30 years, CSV Construction has patiently and persistently been developing and implementing a high-quality proactive, ecocentric and behavioural based environmental, health and safety management programme.

The programme has two clear-cut objectives in mind, namely accident and incident prevention

and environmental preservation.

CSV Construction has achieved these and related environmental, health and safety management objectives due to the company’s innovative and energetic management team’s altruistic approach, the implementation of best practices, and the appointment of competent and experienced staff.

This approach also allows every aspect of a project to be carefully supervised, managed, and measured to ensure that CSV Construction provides clear observa-



They ensure that every project is carefully supervised and managed.



CSV is driven to secure the safety of their staff. Some of the members at the microtunneling machine site in Mitchells Plain.

ble value in the safest, most efficient, and environmentally sustainable manner conceivable.

Further to this, CSV Construction promotes an open communication culture where employees

are educated on the importance of the company’s environmental, health and safety management programme and how their contributions could influence the effectiveness of the programme.

Employees are constantly reminded that they should feel free to share health, safety and environmental concerns in the workplace, as well as suggest ideas for improvement.

**VEELS GELUK MET HIERDIE MYLPAAL.**  
Mag daar nog vele suksesvolle besigheidsjare wees.

**CONCRETE UNITS**  
Specialists in the Manufacture of Precast Concrete (PTY)LTD

2015 FULTON AWARD WINNER INNOVATION IN CONCRETE

**CONCRETE UNITS**  
Tel: Cape Town (021) 386 1923  
Fax: Cape Town (021) 386 2514  
E-mail: precast.ct@concreteunits.co.za  
Website: www.concreteunits.co.za

PROUD MEMBER OF THE CMA

**PRIVATECLIENT FINANCIAL**

**30 jaar** | Veels geluk CSV met julle sukses en voortgesette diens aan die gemeenskap.

Tel: +27 21 6711220 enquiries@privateclient.co.za www.privateclientfinancial.co.za

Private Client Holdings is an authorised financial services provider (License #613)  
Private Client Financial - Reg No: 1990/004177/07

**TIP TRANS GROUP** | EST. 1967

BAIE GELUK AAN CSV CONSTRUCTION MET 30 JAAR VAN SUKSESVOLLE KONSTRUKSIE EN BOU-WERK PROJEKTE!

KLIPHEUWEL PARK, MALMESBURY WEC, KLIPHEUWEL 7300  
TEL: 021 971 1401  
EPOS: INFO@TIPTRANS.CO.ZA

**TIPTRANS.CO.ZA**

Congratulations CSV Construction on 30 years in the industry and for your continued support.

T: 021 981 5558  
south.africa@sgs.com  
www.sgs.co.za

**SGS MATROCAST**

# Creating bright future for youth of South Africa

The CSV Academy was created in 2014 and implemented in schools in 2015 to:

1. Introduce youth to careers within the construction industry – civil engineering, quantity surveying and health and safety, amongst others;
2. Provide support with extra pure mathematics and physical science classes for Grade 11 and 12 learners to enable them to excel academically and pursue further education and career opportunities;
3. Gain exposure and experience in the field by means of learnership programmes and site exposure to make informed decisions about their future careers;
4. Offer bursary opportunities to study at college, technikon and university in their chosen field within construction; and
5. Provide employment opportunities.

The CSV Academy has achieved remarkable success, thanks to the dedication and determination of its tutors, contact teachers, and school principals. Each of these individuals has demonstrated unwavering commitment to the well-being and success of the learners under their guidance.

In addition, once these learners go to sites, the support and mentorship of construction managers, construction supervisors and other site personnel are instrumental in the success of the programme.

More than 30 learners have successfully completed learnership programmes; 27 have been awarded bursaries at college, technikon and university.

CSV is fortunate to have many of these students still in its employment, including those who were part of the very first class.

In 2019, a trades component was introduced to the CSV Academy, expanding its offerings to include a range of additional career opportunities for individuals with practical inclinations, including carpentry and mechanical studies.

Individuals are identified from school and college level, guided through mentorship programmes, and then proceed to studies at tertiary level and the required practical years of training on site before completing trade tests to become certified.

To date, 15 students have been enrolled in the Trades Programme. Currently, two students have



CSV introduces youth to careers within the construction industry and provides support by offering extra classes in pure mathematics and physical science for Grade 11 and 12 learners.

completed their 36 months of practical experience in carpentry and are preparing to take their trade tests. Additionally, four more students are expected to become eligible for their trade test assessments later this year.

The CSV Academy is dedicated to making a positive impact in the lives of youth by creating opportunities for meaningful careers. Hopefully these efforts will continue to benefit many more generations in the future.

As per the CSV Academy slogan, "Today's Youth are Tomorrow's Leaders".



More than 30 learners have successfully completed learnership programmes; 27 have been awarded bursaries at college, technikon and university.

**GO EXTRA**  
The all-new Isuzu **X-RIDER**

**WESTVAAL** MOTOR GROUP | SOMERSET WEST | 021 001 9111 | 47 MYNHARDT STREET | **ISUZU** With you, for the long run

**TRIOLOGY FORMWORK**  
*"Your Vision – We Form It"*

**Gelukwensing aan CSV Construction met die 30ste bestaansjaar. Dankie vir al die ondersteuning aan Trilogy Formwork. Mag daar nog vele suksesvolle jare volg.**

E: garth@trilogyformwork.co.za • C: +27 81 848 1596 • T: +27 21 493 1639  
75 Manhattan Street, Airport Industria, 7490

**RIC AFRICA**  
ENGINEERED DYNAMIC COMPACTION

**Baie geluk aan CSV met 30 jaar in die bedryf! Mag jul van krag tot krag gaan!**

+27 21 975 0933 | +27 82 656 4111 | braam@ricafrica.co.za

**SWORD SYSTEMS**

**We are proud to be the Preferred ICT Support Partner**

for CSV Construction and wish you on your milestone of being in business for 30 years! May CSV Construction continue to grow from strength to strength.

ops@swordsystems.co.za  
021 919 2060 | 067 001 9076 | 30 Bloemhof Rd | Upper Oakdale | Cape Town | 7530 | South Africa